

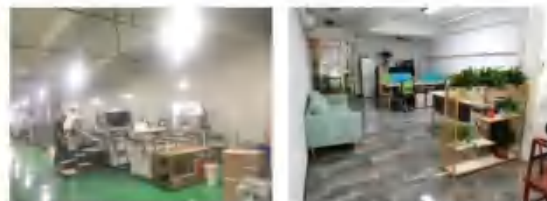


LED display screen manufacturer
Overall solution



Company profile

Keemal Technology Co., Ltd. is a professional manufacturer of LED display screens that integrates production, research and development, and sales. The company is committed to providing customers with comprehensive services. We offer comprehensive product solutions, including indoor and outdoor LED full-color displays, LED high-definition small pitch screens, rental full-color screens, LED sky curtains, LED tile screens, LED transparent screens, LED bus screens, LED traffic screens, LED color screens, LED high-definition advertising screens, LED application display screen development, and other LED display screen projects. LED display screen products are widely used in various stages, studios, exhibitions, shopping malls, squares, hotels, factories, airports, stations, high-end clubs and other places, and are widely used in advertising media, transportation, broadcasting, monitoring, high-end conferences, education, sports, entertainment and other fields.



Cooperation process

We promise to ensure quality and quantity and deliver on time!



Customer case sharing

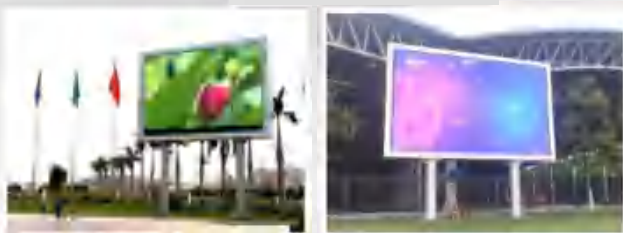
LED Outdoor display screen



Square outdoor screen



Outdoor arc screen



Outdoor P6 column



Outdoor cylindrical screen



installation site



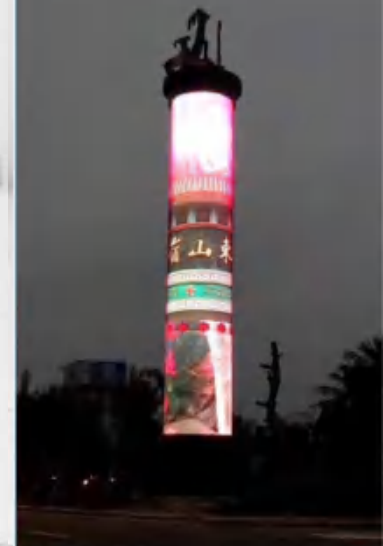
Outdoor P8 170 square meter construction site



Park outdoor P6 column



Outdoor P8 corner screen at a certain square in Shenzhen



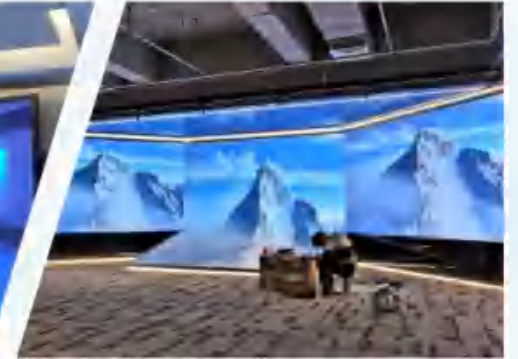
LED indoor display screen



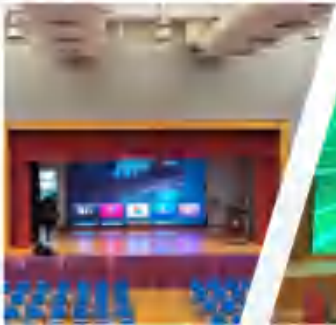
School auditorium



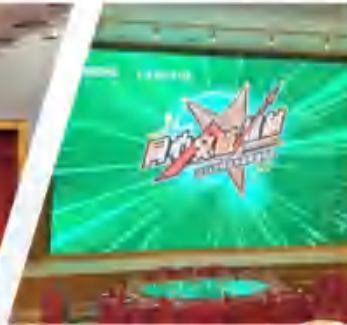
studio



Live streaming room



Function Room



Hotel Stage



Stage rental screen



Hotel small spacing
P1.56



Hotel Ballroom



Shenzhen Southern Fund Building Small Spacing
P1.9



Private club with small spacing
P1.8



Banquet Hall Rental Screen



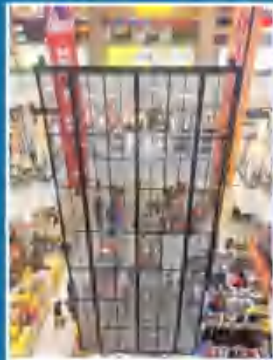
Sales Center P2.5



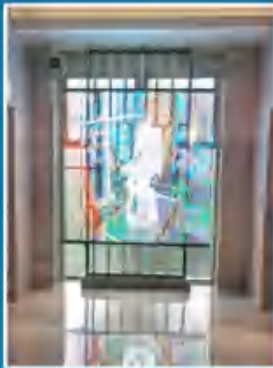
Command Center



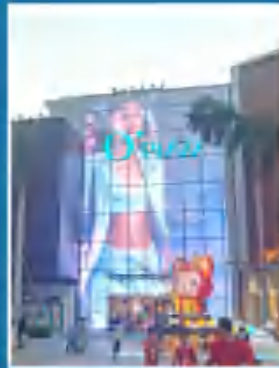
LED transparent screen/glass screen



Transparent screen of sightseeing elevator



LED grille screen



Commercial Plaza



Transparent window display screen



Showcase glass screen

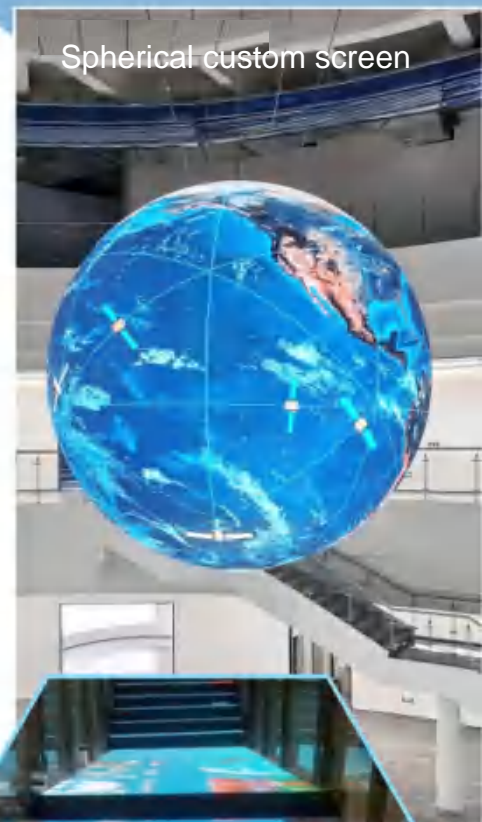
Customized screen with irregular shapes



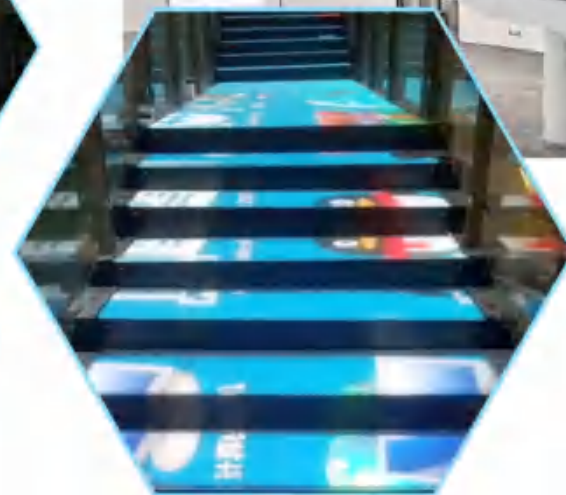
Flexible screen



Sky screen



Spherical custom screen



Staircase screen



High definition small pitch series



Product features

- Die cast aluminum CNC technology, high precision
- Super strong display effect
- Adjustable angle
- Complete front and rear maintenance
- No noise

Application scope:

LED soft full color screen finance, education system, banking, securities market



Product parameters

Pixel pitch	P1.9	P2.4	P2.6	P3.1	P3.9	P4.8
Pixel spacing (mm)	1.9mm	2.4mm	2.6mm	3.1mm	3.9mm	4.8mm
Pixel density (pixels/m ²)	262,144	173,056	147,456	102,400	65,536	43,264
LED Light packaging form	SMD1515	SMD2121	SMD2121	SMD2121	SMD2121	SMD2121
Module resolution (pixels)	128X128	104*104	96X96	80X80	64X64	52X52
Module size (mm)	250*250mm	250*250mm	250*250mm	250*250mm	250*250mm	250*250mm
Box resolution	512x128	416x104	384x96	320x80	256x64	208x52
Box size (mm)	1000*250*38mm					
Box weight (kg)	6kg	6kg	6kg	6kg	6kg	6kg
Display brightness (nits)	1000/3000nits					
Refresh rate (Hz)	≥3840Hz	≥3840Hz	≥3840Hz	≥3840Hz	≥3840Hz	≥3840Hz
Gray level (bits)	≥14	≥14	≥14	≥14	≥14	≥14
Module weight (kg)	0.5kg	0.5kg	0.5kg	0.5kg	0.5kg	0.5kg
Maximum power consumption of the box (W/m ²)	480W/m ²	480W/m ²	480W/m ²	480W/m ²	480W/m ²	480W/m ²
Average power consumption of the enclosure (W/m ²)	200W/m ²	200W/m ²	200W/m ²	200W/m ²	200W/m ²	200W/m ²
Viewing angle and vertical perspective	160°/160°					
Working temperature range	-20~+50 10~90%					
Working power supply (V)	110V~220V 50/60Hz					
Protection level	IP20					
Maintenance mode	Pre maintenance					
Signal input solution	5-video, VGA, DVI, HDMI, SDI					
Signal input source	3C, 优酷, CF, FCC, ETL, EMC					



Intelligent conference all-in-one machine series

to ground



hanging



Product features

- Standard 2K, 4K ultra HD video
- Super strong display effect
- Adjustable angle
- Support rich application
- Ultra large screen display
- Full front/back, 360-degree, strong stability
- High brightness, 8-axis adjustable, high contrast and high color reproduction
- 99+ free content (more than 1000) and content management

Application scope:

Conference all-in-one machine for meetings, education, and training



Product parameters

Screen size (inch)	113 inches (2916mm)	131 inches (3328mm)	158 inches (4012mm)	181 inches (4596mm)	225 inches (5715mm)	268 inches (6808mm)
Resolution	Android	Android	Android	Android	Android	Android
Control system	Quad-core (Cortex A73) 6-core (Cortex A53) 2-core (Cortex M72)					
Screen size (mm)	1600*900	1920*1080	1792*1008	2160*1170	1920*1080	
Screen size (mm)	2.5*1.406	3*1.687	3.5*1.968	4*2.25	5*2.81	(3+3)*1.68
Screen size (mm)	3.515	5.0625	6.89	9	14.0625	10.125
Brightness	100-4950 can be wither	100-4800 can be	100-6000 can be	100-6950 can be	100-6000 can be	100-6000 can be wither
Max. H. res.	3840px					
Interface	HDMI2.0 (2x), USB 3.0x1, USB 2.0x1					
Video decoder	250 decoder, Bluetooth, Mouse, Jie, U, Bluetooth, WIFI, antenna remote control					
Resolution	2,515	3,015	3,515	4,015	5,015	6,015
Weight	1,528	1,81	2,091	2,372	2,935	1,81
Material	Metal, Aluminum/Plastic, Powder Coating/ETG					
Call in speaker	Yes					
Max. video resolution	Standard 1080P, optional 4K, HDR, HDR10, HDR10+, HDR20, HDR21, HDR22, HDR23, HDR24, HDR25, HDR26, HDR27, HDR28, HDR29, HDR30, HDR31, HDR32, HDR33, HDR34, HDR35, HDR36, HDR37, HDR38, HDR39, HDR40, HDR41, HDR42, HDR43, HDR44, HDR45, HDR46, HDR47, HDR48, HDR49, HDR50, HDR51, HDR52, HDR53, HDR54, HDR55, HDR56, HDR57, HDR58, HDR59, HDR60, HDR61, HDR62, HDR63, HDR64, HDR65, HDR66, HDR67, HDR68, HDR69, HDR70, HDR71, HDR72, HDR73, HDR74, HDR75, HDR76, HDR77, HDR78, HDR79, HDR80, HDR81, HDR82, HDR83, HDR84, HDR85, HDR86, HDR87, HDR88, HDR89, HDR90, HDR91, HDR92, HDR93, HDR94, HDR95, HDR96, HDR97, HDR98, HDR99, HDR100					
Material	Metal					
Total weight (kg)	74	106	145	177	295	212
Service life	2100000 hours					



► Irregular LED full-color series



Product features

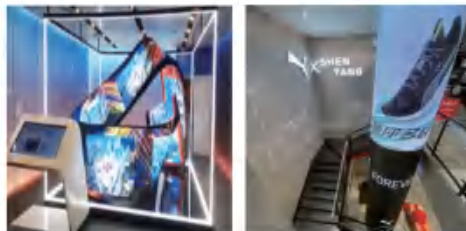
- Selected high performance PCB boards, combined with rigorous process flow, significantly reduced the phenomenon of "color separation"
- PCB solder pads are treated with gold plating technology and high-performance connectors are plated with gold to ensure the oxidation resistance of the module.
- High contrast design with up to 8000:1. SMD package processing capability, and more perfect color reproduction.
- Adopting PWM constant current (pulse-width modulation) drive scheme with double color-mixing circuit, completely eliminating flicker.
- AI image without "color spill" or "ghosting". Optional "software" calibration, iron bracket used as support base, with special installation tools to achieve precise installation maintenance. Multiple installation methods such as fixed installation and lifting are implemented according to actual application scenarios, ensuring reliability and maintenance convenience.

Product parameters

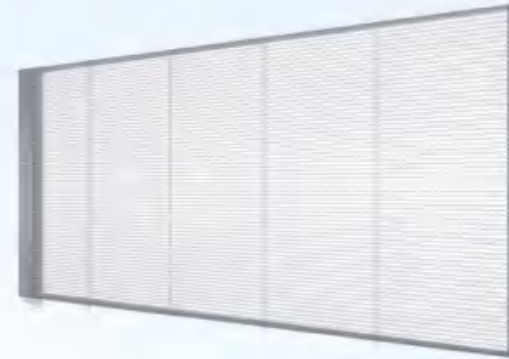
Model	colour	IF(mA)	Rd(nm)	Iv(mcd)	Vf(V)	View angle
SMD2121	Red	15	620	50	2.0	110
	Green	10	525	170	3.0	110
	Blue	8	470	23	3.0	110
Sheet spacing	4mm					
Sheet density	62500 dots/m ²					
Unit length	2000 bracket lamp beads					
LED bead resolution	84 pixels x 50 pixels /high					
LED bead size	Width:2.0mm x Height:1.05mm x Thickness:0.6mm (including magnification column: thickness: 0.6mm)					
Unit board weight	0.1kg					
Bending radius	Center bending curvature > 100°, angle bending curvature > 100°, guiding bending curvature > 50°					
Bending times	>1000 times					
Distance gap	20000 consistent flow					
Service voltage	1/16E3					
Working voltage	DC5V±10%					
Maximum current	5A					
Maximum power	25W					
Power interface	VH4					
Signal interface	HUB75D(I2C/I2)					
Brightness	≥1000cd/m ²					
Contrast	9000±500K					
Viewing angle	Horizontal viewing angle 120° Vertical viewing angle 120°					
Installation height	≥4m					
Displayable text	214 bit					
Refresh rate	60Hz					
Refresh frequency	21920Hz (Depending on system load)					
Load range	Width: 120 pixels, maximum height: 128 pixels (display value)					
Adjustable screen size	0 to 250 adjustable					
Service life	50000 hours					
Working temperature	-30 °C to 60 °C					
Working humidity	10%~90% RH without condensation					
Storage temperature	-40 °C to 60 °C					

Application scope:

LED soft full color screen bars, exhibition halls, and shopping malls



► Commercial Smart LED Screen Series



Product features

- High-contrast state
- High permeability
- Ultra thin and lightweight
- Easy to set up
- Ultra high brightness
- Easy to maintain
- Stable performance/excellent quality
- Energy saving and low carbon absorption
- High cost performance ratio

Product parameters

Product model	P1.7-4.8	P2.48	P3.4-6.9	P4.48-P6.9
Resolution	1.73Kx481	2.08Kx481	3.47Kx944	4.46Kx944
led	1415	1415	1921	1921
Pixel pitch	1R1G1B	1R1G1B	1R1G1B	1R1G1B
Displaying Zhi	Ultra-high contrast	Ultra-high contrast	Ultra-high contrast	Ultra-high contrast
Pixel density	119808 dot/m ²	99840dot/m ²	41472dot/m ²	25088dot/m ²
Number of module	5.76x208dot	4.80x208dot	288x144dot	224x112dot
Module resolution	Common format size	Common format size	Common format size	Common format size
Box size	1000x500mm	1000x500mm	1000x500mm	1000x500mm
Box material	Profile+PC	Profile+PC	Profile+PC buckle	Profile+PC buckle
Screen weight	buckle<8KG/m ²	buckle<8KG/m ²	<8KG/m ²	<8KG/m ²
LED screen brightness	5500-6000CD/m ²			
Maximum power per unit area	<800W/m ²	<800W/m ²	<800W/m ²	<800W/m ²
Control system	Carlette/Watt	Carlette/Watt	Carlette/Watt	Carlette/Watt
Refresh rate	>180Hz	>180Hz	3840Hz	3840Hz
Resolution, bit	>14bit	>14bit	14bit	14bit
Display contrast	Support 1000:1	Support 1000:1	Support 1000:1	Support 1000:1
Transmittance	≥70%	≥75%	≥77%	≥85%
Video interface	DC5V	DC5V	DC5V	DC5V
Power cooling method	Self cooling/profiles			
Input power over the box	AC 100V-230V			
Temperature and humidity	P20	P30	P30	P30
Installation method	Hanging wall/fixing / mobile cabinet/stand			
Working temperature	-35°-65°	-35°-65°	-35°-65°	-35°-65°
Working humidity	10%-90% non condensing			

Application scope:

LED transparent screen glass curtain wall, canopy, showcase, rental



